

L TIMING PULLEYS

0.375" Trapezoidal Pitch

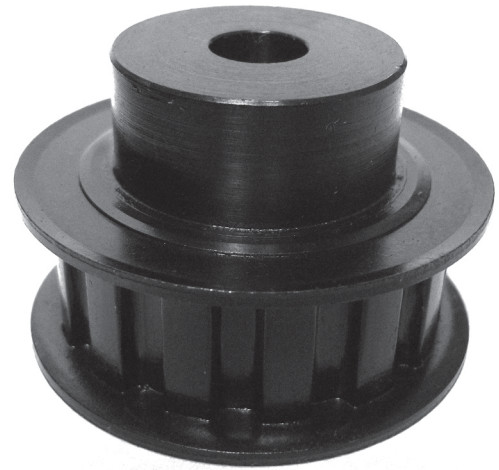
For 1/2" Wide Belts

Hub and Flanges

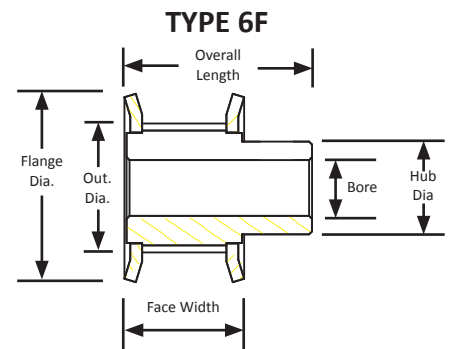
Steel/Iron

Black Oxide Plating

Minimum Plain Bore



Part Number	No. of Teeth	Type	Pitch Dia (in)	Out. Dia (in)	Flange Dia. (in)	Bore (in)	Face Width (in)	Overall Length (in)	Hub Dia. (in)
10L050-6FS5	10	6F	1.194	1.164	1.438	0.375	0.750	1.250	0.812
12L050-6FS5	12	6F	1.432	1.402	1.656	0.375	0.750	1.250	1.000
13L050-6FS5	13	6F	1.552	1.522	1.781	0.375	0.750	1.250	1.125
14L050-6FS5	14	6F	1.671	1.641	1.906	0.375	0.750	1.250	1.125
15L050-6FS6	15	6F	1.790	1.760	2.031	0.500	0.750	1.250	1.344
16L050-6FS6	16	6F	1.910	1.880	2.125	0.500	0.750	1.250	1.437
17L050-6FS6	17	6F	2.029	1.999	2.250	0.500	0.750	1.250	1.437
18L050-6FS6	18	6F	2.149	2.119	2.375	0.500	0.750	1.250	1.563
19L050-6FS6	19	6F	2.268	2.238	2.500	0.500	0.750	1.250	1.687
20L050-6FS6	20	6F	2.387	2.357	2.625	0.500	0.750	1.250	1.687
21L050-6FS6	21	6F	2.507	2.477	2.750	0.500	0.750	1.250	2.000
22L050-6FS6	22	6F	2.626	2.596	2.875	0.500	0.750	1.250	2.000
24L050-6FS6	24	6F	2.865	2.835	3.094	0.500	0.750	1.250	2.250
26L050-6FS6	26	6F	3.104	3.074	3.330	0.500	0.750	1.250	2.250
28L050-6FS6	28	6F	3.342	3.312	3.566	0.500	0.750	1.250	2.250
30L050-6FS6	30	6F	3.581	3.551	3.800	0.500	0.750	1.250	2.250
32L050-6FS6	32	6F	3.820	3.790	4.044	0.500	0.750	1.250	2.625
36L050-6FS6	36	6F	4.297	4.267	4.520	0.500	0.750	1.250	3.500
40L050-6FS6	40	6F	4.775	4.745	5.000	0.500	0.750	1.250	3.625



B&B Manufacturing, Inc. is pleased to announce the certification of our Quality Management System to the ISO 9001:2008 standard. The certification of compliance with the ISO 9001:2008 standard recognizes that the policies, practices and procedures of B&B Manufacturing provide consistent quality in the products that we provide to our customers. B&B Manufacturing engaged in a demanding and detailed evaluation process of our entire quality management system with SAI Global. This evaluation reviewed system development, documentation, internal audits, clearance of non-conformances and every quality management procedure in the company. This proactive decision to become ISO 9001:2008 certified demonstrates our commitment to providing our customers with high quality precision mechanical components and power transmission products. It is another step in its commitment to continual improvement and customer service.



SAI GLOBAL
ISO 9001
Quality